

Injection Date : Wed, 18. Oct. 2023

Seq Line : 4

Location : 46

Inj. Vol. : 2 µl

Acq. Method : C:\Users\Public\Documents\ChemStation\1\Data\SE18OCT 2023-10-18
09-07-12\22010446C LCMS-6#.M

Analysis Method : C:\Users\Public\Documents\ChemStation\1\Data\SE18OCT 2023-10-18
09-07-12\22010446C LCMS-6#.M (Sequence Method)

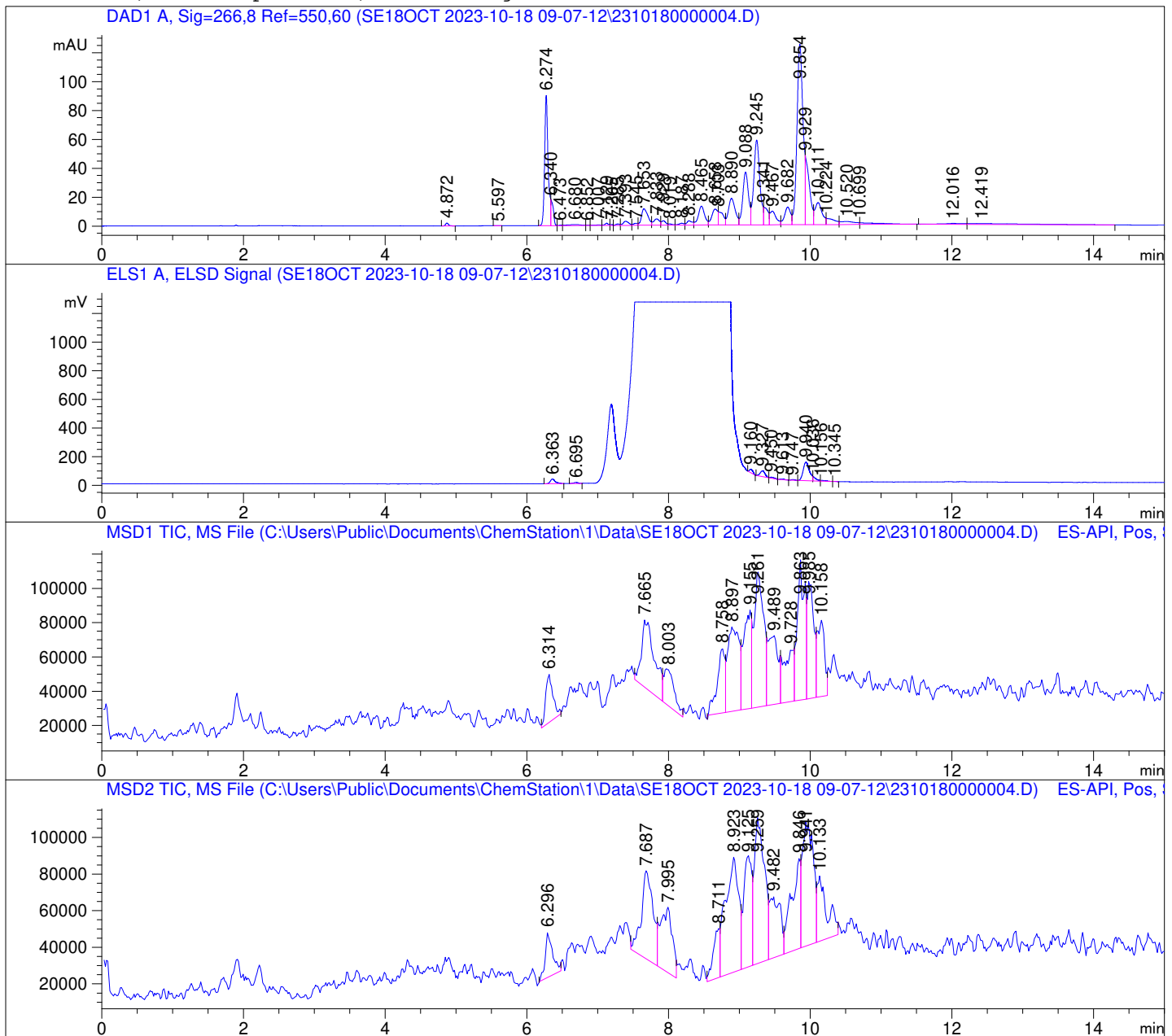
Waters XBridge BEH Amide (4.6 x 150 mm, 2.5 µm); PN# 186006726

Mobile Phase A: 20mM Ammonium Acetate (aq) pH 8.2

Mobile Phase B: AcN

Mobile Phase A / Mobile Phase B: 5/95 (0 min) --> (10 min) --> 60/40 (5 min); Flow:

1.0 ml/min; MSD1 = positive; MSD2 = negative



DAD1 A, Sig=266,8 Ref=550,60

Peak #	Ret. Time [min]	Area [mV *s]	Area %
1	4.872	5.447	0.197
2	5.597	0.376	0.014
3	6.274	309.569	11.169
4	6.340	41.122	1.484
5	6.473	0.884	0.032
6	6.680	8.401	0.303
7	6.852	0.798	0.029
8	7.007	2.466	0.089
9	7.129	5.328	0.192
10	7.205	1.281	0.046
11	7.285	3.692	0.133
12	7.393	15.405	0.556
13	7.545	5.997	0.216
14	7.653	71.509	2.580
15	7.833	25.132	0.907
16	7.929	13.476	0.486
17	8.019	3.491	0.126
18	8.187	6.827	0.246
19	8.288	16.003	0.577
20	8.465	82.045	2.960
21	8.658	64.170	2.315
22	8.703	45.233	1.632
23	8.890	124.195	4.481
24	9.088	206.534	7.452
25	9.245	346.793	12.512
26	9.341	52.679	1.901
27	9.467	58.310	2.104
28	9.682	73.001	2.634
29	9.854	735.672	26.543
30	9.929	195.889	7.068
31	10.111	107.893	3.893
32	10.224	36.394	1.313
33	10.520	30.241	1.091
34	10.699	24.755	0.893
35	12.016	13.541	0.489
36	12.419	37.079	1.338

ELS1 A, ELSD Signal

Peak #	Ret. Time [min]	Area [mV *s]	Area %
1	6.363	154.263	10.602
2	6.695	30.703	2.110
3	9.160	82.619	5.678
4	9.327	194.527	13.369
5	9.450	31.440	2.161
6	9.613	15.278	1.050
7	9.747	15.967	1.097
8	9.940	795.968	54.703
9	10.036	98.037	6.738
10	10.156	30.969	2.128
11	10.345	5.302	0.364

